

1 Installing the Crewsafe Management System

Installation of the Crewsafe Management System is a two stage process that includes:

1. Installation of the Microsoft® .NET Framework.
2. Installation of the Crewsafe Management System.

Installation Prerequisites

Prior to installation:

- Ensure you have the Mobilarm USB flash drive (thumb drive) with all software components required for installation.
- Check that the operating system on the PC you are using is Microsoft® Windows® XP or Vista and that you have administration rights.
- Check the USB or serial connection between your PC and the Display Console is installed correctly.

The Crewsafe Installation Manual contains wiring diagrams for connecting RS-422 and RS-232 serial cables from the PC to the Display Console. (See the section titled 'Connection to the Crewsafe Management System.') RS-422 is recommended because it is:

- Higher quality.
- More reliable.
- More compliant with NMEA-0183 protocols.

Step 1: Installing Microsoft® .NET Framework

Microsoft .NET Framework 3.5 SP1 needs to be installed on the PC that the Crewsafe Management System is running on. To install this software:

1. Insert the supplied USB flash drive into a USB port on your PC.
2. Open the flash drive on the PC to view all files.
3. Double-click on the "dotnetfx35_Sp1.exe" file.
4. Click to accept the License Agreement and then click **Install>** to complete software installation.

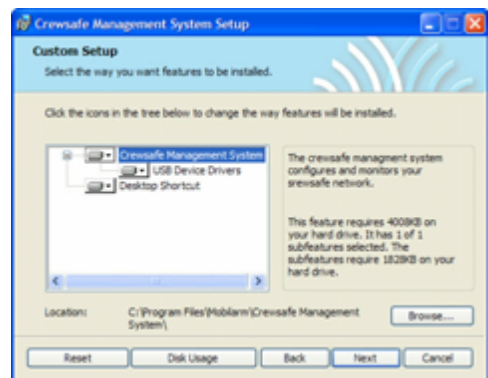
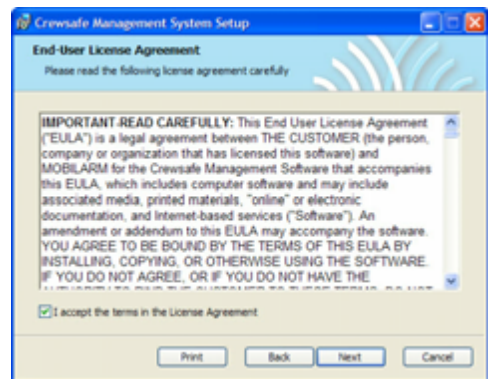
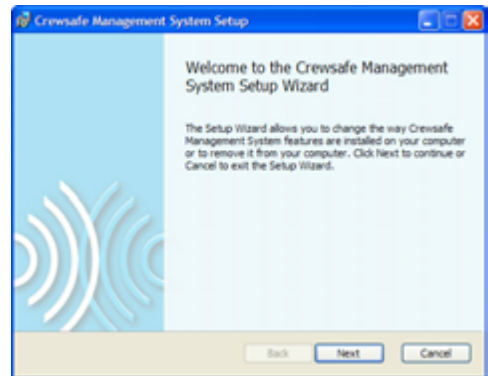


Step 2: Installing the Crewsafe Management System

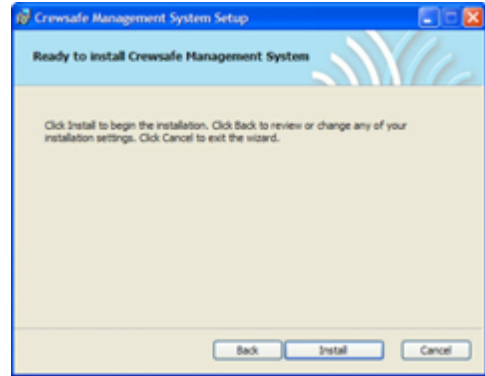
Installation of the Crewsafe Management System includes:

- Installation of software drivers.
- Installation of the system database.
- Installation of the Crewsafe Management Software program.

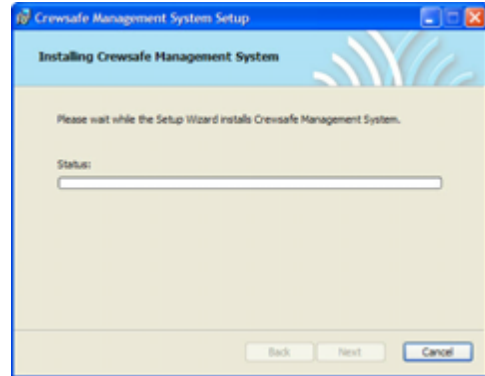
1. Insert the supplied USB flash drive into a USB port on your PC.
2. Open the flash drive on the PC to view all files.
3. Double-click on the "CmsSetup.msi" program file.
4. Click **Next** to commence installation.
5. Select the License Agreement check box.
6. Click **Next** to continue.
7. Click **Browse** to select an installation location on the PC or just click **Next** to continue.



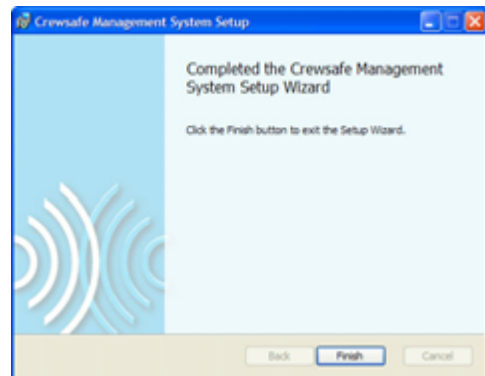
8. Click **Install** to commence installation.



9. The status bar monitors the progress of installation.



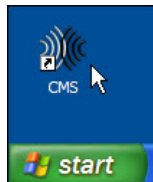
10. Click **Finish** to complete installation.



Opening the Crewsafe Management System Program

There are two ways to open the Crewsafe Management System program:

1. Double-click on the **CMS** program icon on the desktop of your PC.



- From the **Start** menu point to **Mobilarm**, then **Crewsafe** and click **CMS**.



Confirming Installation

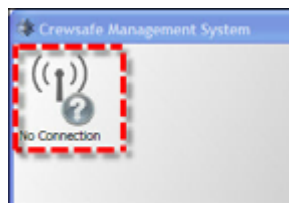
To confirm installation you need to check that the PC serial or COM port is providing data communication between the PC and the Display Console. Connection is confirmed by the **System Operational** symbol displayed in the top left-hand corner of the screen.



Crewsafe Management System

USB COM Port Troubleshooting

When connecting over USB the Crewsafe Management System should automatically scan for the correct COM port when the program is opened. If the **No Connection** symbol is displayed you will need to check the **Com Port** setting in the Crewsafe Management System.



No Connection Symbol

COM Port settings are controlled from the **CMS Settings** page within the Crewsafe Management System. Navigate to this page via the main system menu by selecting **Control Panel**, then **Settings & Configuration** and **CMS Settings**.

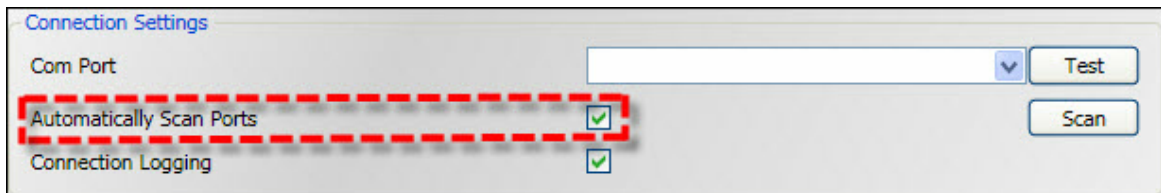


Navigation to CMS Settings

Perform the following steps in sequence until the PC detects the COM port that the USB cable is connected to.

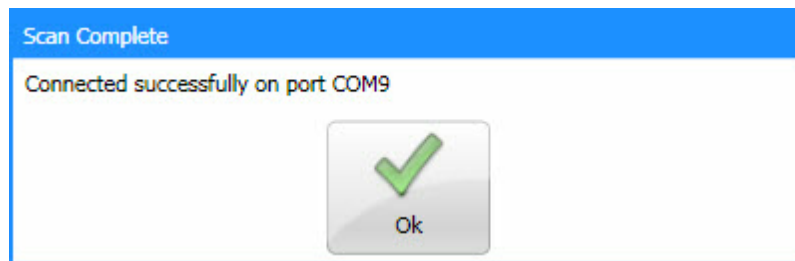
Step 1: Perform a Port Scan

The **Automatically Scan Ports** check box should be selected by default. Ensure it is selected and click the **Scan** button to automatically scan for the USB port that the Crewsafe Management System PC is using to connect to the Display Console.



Automatically Scan Ports Selected

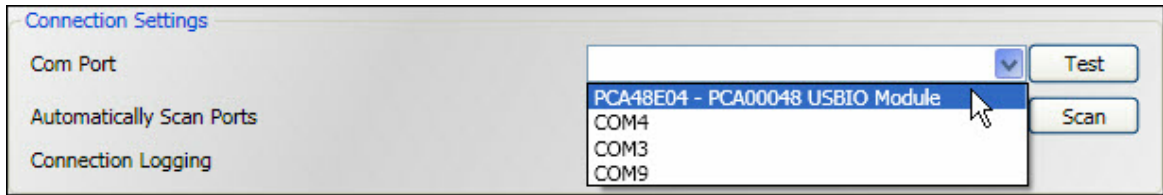
The Crewsafe Management system searches for the port and in most cases automatically finds it for you.



Com Port Found Dialog

Step 2: Select the Com Port Manually

If you know which port you are connecting the system to on the PC, use the drop-down arrow to select it from the **Com Port** list box. If you are connecting to a PC with a Mobilarm USBIO module installed select this option from the list box.

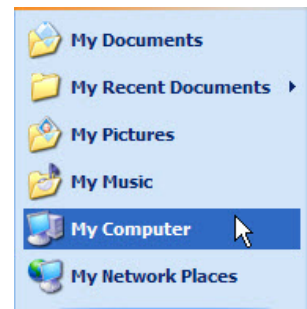


Mobilarm USB IO Module Selected in the Com Port List Box

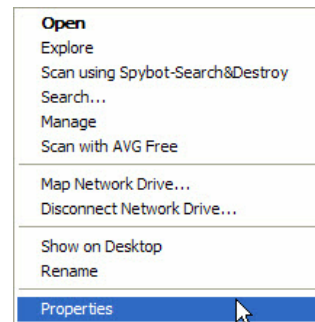
If you are not sure about the correct port you will need to check the **Device Manager** on your PC to determine which COM port the Crewsafe Management System is using. The procedures for both Windows® XP and Vista are as follows.

To perform this check in Windows® XP:

1. Right-click over **My Computer**.



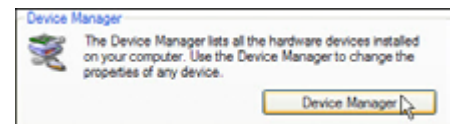
2. Select **Properties**.



3. Select the **Hardware** tab in the **System Properties** dialog

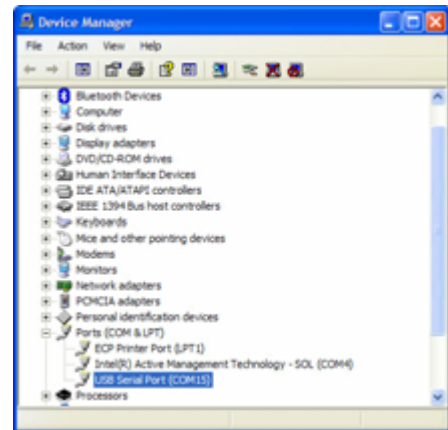


4. Press the **Device Manager** button.



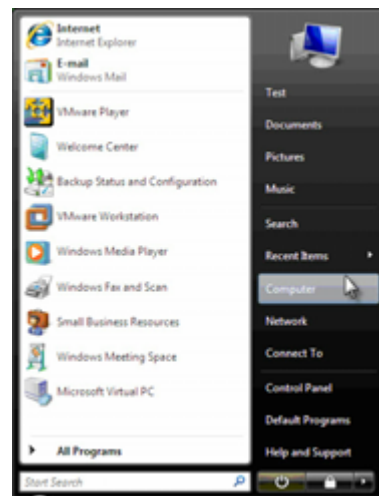
5. In the **Device Manager** dialog expand **Ports (COM & LPT)** to view all COM ports listed.
6. Determine the COM port being used by the PC and select this option in the Crewsafe Management System **Com Port** list box.

Note: If you have multiple COM ports displayed and you are not sure which port the Crewsafe Management System is using, remove the USB cable from the PC and then replace it to identify the port.

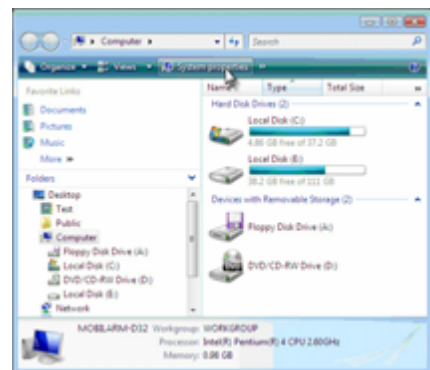


To perform the COM port check in Windows® Vista:

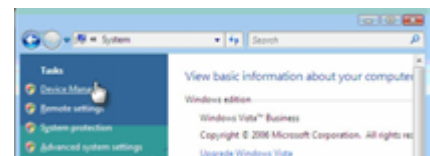
1. From the **Start** menu click **Computer**



2. Click **System properties**.

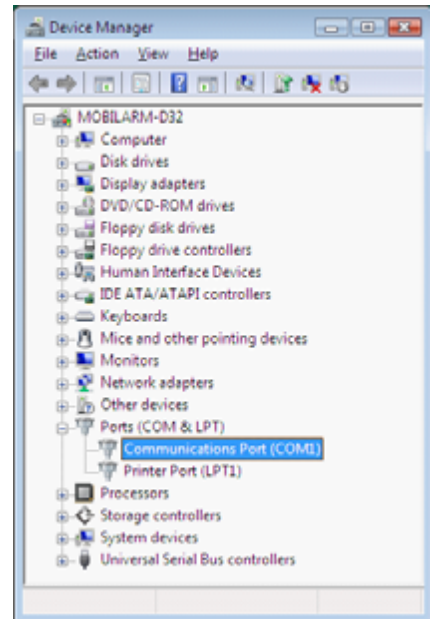


3. Click **Device Manager**.



4. In the **Device Manager** dialog expand **Ports (COM & LPT)** to view all COM ports listed.
5. Determine the COM port being used by the PC and select this option in the Crewsafe Management System **Com Port** list box.

Note: If you have multiple COM ports displayed and you are not sure which port the Crewsafe Management System is using, remove the USB cable from the PC and then replace it to identify the port.



Commissioning the Crewsafe Management System

After installing the Crewsafe Management System please consult the Crewsafe Management System User Manual for details on commissioning the system.

Credit Notices:

1. *Microsoft and Windows are registered trademarks of Microsoft Corporation in the United States and/or other countries.*
2. *Windows XP, Vista and .NET Framework are trademarks and/or registered trademarks of Microsoft Corporation in the United States and/or other countries.*